



**GALVANISED
TAPERED OCTAGONAL
STEEL LIGHTING COLUMNS**

Other Products & Services:

- 1. Steel Fabrication (ISO 9001: 2008 & OHSAS 18001: 2007 Certified)
- 2. Hot-Dip Galvanizing (ISO 9001: 2008 & OHSAS 18001: 2007 Certified)
- 3. Steel Pipes Manufacturing (ISO 9001: 2008 Certified)
- 4. LPG Cylinders Manufacturing (ISO 9001: 2008 & OHSAS 18001: 2007 Certified)
- 5. Civil Construction (OHSAS 18001: 2007 Certified)
- 6. uPVC Roofing Sheets Manufacturing



KKB ENGINEERING BERHAD (26495-D)
 Lot 865, Section 66, Jalan Kilang, Bintawa Industrial Estate,
 93450 Kuching, Sarawak, Malaysia.
Tel: (6) 082-333 877 **Fax:** (6) 082-331 152
E-Mail: kkbeb@kkbeb.com.my **Website:** www.kkbeb.com.my



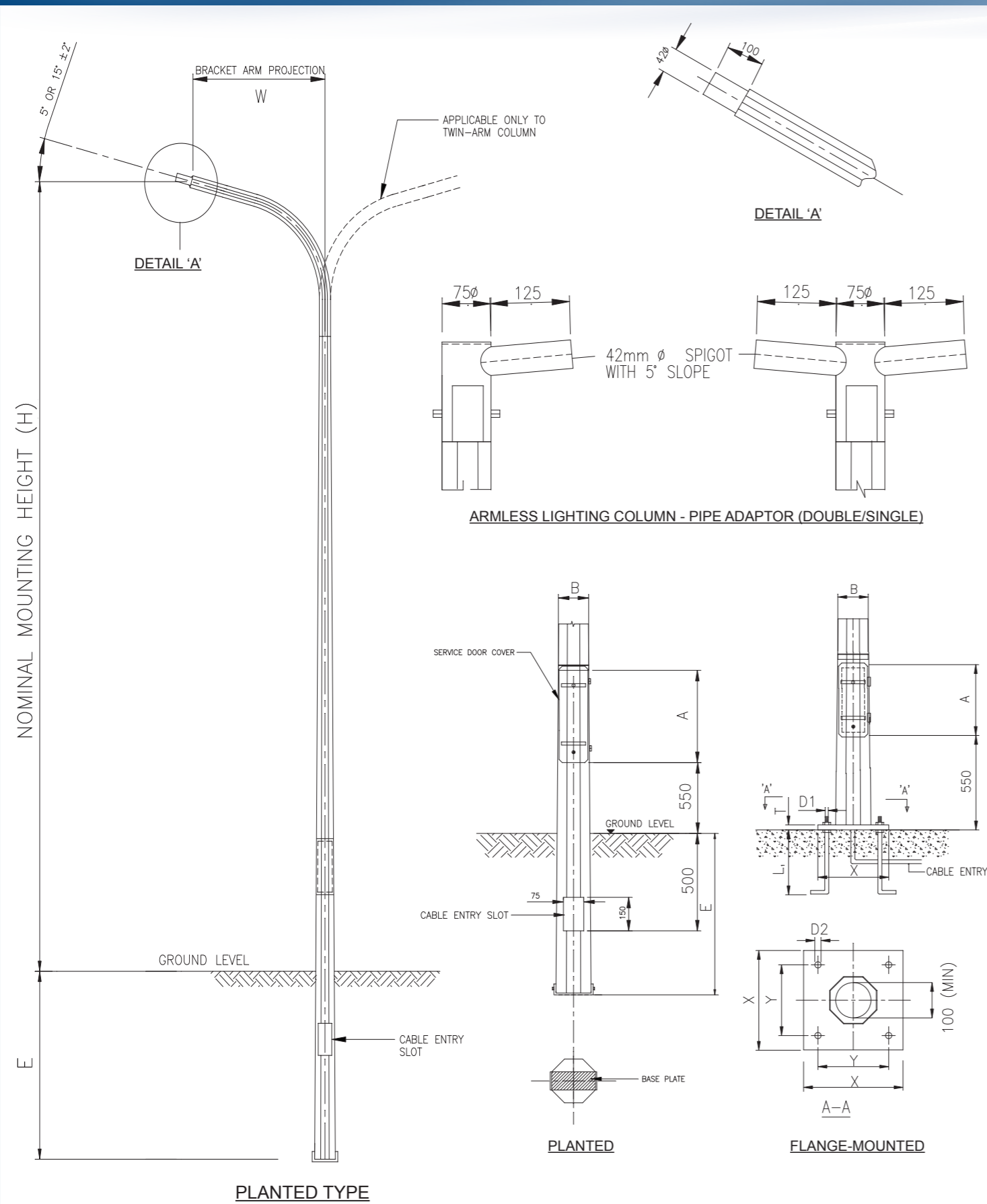
(COMPANY No: 26495-D)

LIGHTING COLUMNS CERTIFIED BY SIRIM QAS



SIRIM
CERTIFIED TO BS EN 40: PT. 5: 2002
Certification No: PK 010101

OUR PRODUCT RANGE OF 6m, 8m, 10m AND 12m ARE SIRIM CERTIFIED IN COMPLIANCE WITH BS EN 40: PT. 5: 2002



NOTES

- Column of 6m, 8m, 10m and 12m nominal height are in conformance to BS EN 40: Pt. 5: 2002
- All columns are designed to withstand 27m/s or 60mph wind.
- Columns of nominal height other than as stated in 'Notes' are designed and fabricated with reference to the same standard.
- Steel sheet conforms to BS EN 10025 S235, S275 or equivalent.
- Column longitudinal welding conforms to BS 5135: 1974 by automatic continuous M.I.G. welding process.
- Columns are hot-dip galvanized to BS EN ISO 1461:1999 with minimum coating weight of 450g/m².
- Service door dimensions are given as a guide only. The Engineer must satisfy himself that the dimension given is adequate for the installation of the required control gears.
- For 6m to 9m column mounting height, flange-mounted or planted type, the column shall be fabricated in 3 sections, while for 10m to 12m mounting height columns, the columns shall be fabricated in 4 sections.
- It is recommended that $W \leq H/4$.
- Unless otherwise specified, all dimensions are in mm.

TECHNICAL INFORMATION

TYPE	H(m)	E			W(m)	A	B
		I	II	III			
PLANTED	6	800	1000	1200	0.75 - 3.00	600	130
	7	900	1100	1350	0.75 - 3.00	600	130
	8	1000	1200	1500	0.75 - 3.00	600	130
	9	1100	1350	1600	0.75 - 3.00	600	130
	10	1200	1500	1700	0.75 - 3.00	600	130
	10A	1200	1500	1700	Armless	600	130
	11	1350	1600	1850	0.75 - 3.00	600	130
	12	1500	1700	2000	0.75 - 3.00	600	130

TECHNICAL INFORMATION

TYPE	H(m)	D ₁	D ₂	L ₁	W(m)	A	B	X	Y
FLANGE-MOUNTED	6	M24	30	500	0.75 - 3.00	600	130	400	300
	7	M24	30	500	0.75 - 3.00	600	130	400	300
	8	M24	30	500	0.75 - 3.00	600	130	400	300
	9	M24	30	500	0.75 - 3.00	600	130	400	300
	10	M24	30	500	0.75 - 3.00	600	130	400	300
	10A	M24	30	500	Armless	600	130	400	300
	11	M24	30	500	0.75 - 3.00	600	130	400	300
	12	M24	30	500	0.75 - 3.00	600	130	400	300

NOTE: The diagrams are not to scale and are for general information only. The contents may be subject to change. KKB Engineering Berhad and its Group of Companies cannot be held responsible for any misrepresentations herein.